

## Plants' Life

**I. Answer the following questions :**

- Ans.**
1. A very small and seasonal plant is called herb. For example, mint and tulsi.
  2. Trees.
  3. Because climbers have very weak stems.
  4. These broad leaves help the plants to float in water.
  5. It help them to store water.

**II. Fill in the blanks :**

- Ans.**
1. Trees have **hard** stems.
  2. Shrubs have **many** branches.
  3. **Climbers** have weak stems.
  4. Herbs have **soft** stems.
  5. The **herbs** live only for one season.

**III. Write whether the following statements are 'true' or 'false' :**

- Ans.**
1. All plants have different shapes but same size. **False**
  2. Very big and strong plants are called shrubs. **False**
  3. Climbers have a weak stem. **True**
  4. Most trees live for many years. **True**

**IV. What are the following called?**

- Ans.**
1. Very small, seasonal plants. **herbs**
  2. Plants with thick and brown stems. **trees**
  3. Plants which need support to climb up. **climbers**
  4. Bushy plants with thick stems. **shrubs**
  5. Plants which grow on or under water. **aquatic**

**V. Match the following columns :**

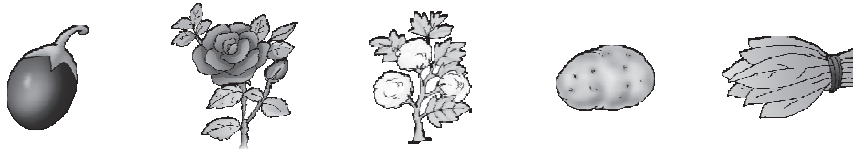
- | <b>Ans.</b> | <b>Column 'A'</b> | <b>Column 'B'</b>               |
|-------------|-------------------|---------------------------------|
|             | 1. Water plant    | (e) <b>broad leaves</b>         |
|             | 2. Desert plant   | (g) <b>thorns, thick leaves</b> |
|             | 3. Herb           | (c) <b>soft, weak stem</b>      |
|             | 4. Shrub          | (f) <b>thin, strong stems</b>   |
|             | 5. Tree           | (d) <b>hard, thick stem</b>     |
|             | 6. Rose plant     | (b) <b>shrub</b>                |
|             | 7. Bean plant     | (a) <b>climber</b>              |

**VI. Encircle the odd one from each of the following :**

- Ans.** 1. Grapevine, cactus , money plant, pea plant  
 2. Pumpkin, cucumber, watermelon, beans  
 3. Cotton, rose, jasmine, mint  
 4. Hydrilla , neem, banyan, mango

**VII. Complete the following cross-word with the help of pictures.**

**Ans.**



1.	B	2.	R	I	N	J	A	L	
			O						
		3.	S	P	I	N	A	5.	C
			E						H
									O
									T
					4.	C	O	T	T
									O
									N
		6.	P	O	T	A	T	O	
									N

**VIII. Tick (✓) the correct option :**

- Ans.** 1. Which of the following is a climber?  
 (a) Bean  (b) Cotton   
 (c) Rose  (d) Pine
2. Banyan is a :  
 (a) Herb  (b) Shrub   
 (c) Tree  (d) Climber
3. Hibiscus is an example of a :  
 (a) Herb  (b) Shrub   
 (c) Tree  (d) Creeper
4. Which of the following plant lives for one season only?  
 (a) Coconut  (b) Mango   
 (c) Jasmine  (d) Corn
5. Which of the following is a herb?  
 (a) Spinach  (b) Cotton   
 (c) Guava  (d) Plum

# Wild Animals

## I. Answer the following questions :

- Ans.
1. Lion, fox and tiger.
  2. Zebra, elephant and deer.
  3. Wolf, bear, leopard.
  4. (i) Herbivores (ii) Carnivores (iii) Omnivores.
  5. Try to protect wild animals.

## II. Write whether the following statements are 'true' or 'false' :

- Ans.
1. A rabbit lives under a tree.
  2. A rat is a small animal.
  3. A zebra eats both plants and animals.
  4. Vultures eat dead animals.
  5. Birds build their nests in the trees.
  6. Saving wildlife is not very important.

False  
True  
False  
True  
True  
False

## III. Match the following columns :

- | Ans. | Column 'A'              | Column 'B'                    |
|------|-------------------------|-------------------------------|
|      | 1. Wild animals live in | (c) forests                   |
|      | 2. Elephants live       | (a) under the shade of a tree |
|      | 3. A hawk eats          | (d) birds and small animal    |
|      | 4. A giraffe is a       | (b) herbivorous animal        |
|      | 5. A vulture eats       | (e) dead animals              |

## IV. Fill in the blanks :

- Ans.
1. **Elephants** are killed for their tusks.
  2. A bear lives in a **forest**.
  3. Rhinoceroses are hunted for their **horns**.
  4. **Snake** lives in holes dug by other animals.
  5. A group of animals is called a **herd**.

## V. Cross out the wrong word from the following :

- Ans.
1. Lion/~~Rabbit~~ comes in the group of big animals.
  2. Zebra eats grass/~~flesh~~.
  3. Birds/~~Rats~~ build their nests to live in.
  4. ~~Cow~~/Bear eats both plants and animals.

## VI. Tell, who am I?

- Ans.
1. I am hunted for my skin.
  2. I have a very long neck.
  3. I sleep on trees.
  4. I dig burrows.
  5. I am a big animal. I live in large groups.

tiger  
giraffe  
monkey  
rabbit  
elephant

## Water Animals and Protecting Animals

### I. Answer the following questions :

- Ans.**
- Animals that live in water are called water animals.  
A **sea horse** is a small sea fish. Unlike other fish which swim side ways, it swims up and down. Its head looks like the head of a horse.  
A **star fish** has a spiny skin and are star-shaped. They cannot swim but they can only crawl.
  - Oyster** is a large flat shellfish. Some oysters produce shiny white fish called pearls.  
**Octopus** have a shell to protect itself. It has eight arms that is why it is called octopus.
  - Fish swim with the help of fins. They breathe through gills.
  - Because all over the world existence of wild animals is in danger.

### II. Fill in the blanks :

- Ans.**
- Oysters are large **flat shellfish**.
  - The **sea horse** swims straight up.
  - Starfish cannot **swim**.
  - The jellyfish has a sharp **sting**.
  - Jelly fish** look like a flower.

### III. Write whether the following statements are 'true' or 'false' :

- Ans.**
- The body of a fish is covered with scales. **True**
  - Fish produce babies. **False**
  - Fish breathe through fins. **False**
  - The World Wildlife Fund (WWF) protects animals. **True**
  - Wild animals are not in danger. **False**

### IV. Which water animal am I?

- Ans.**
- I make pearl. **oyster**
  - I have eight arms. **octopus**
  - I can walk side ways. **crab**
  - I have a soft body and thin tentacles. **jellyfish**
  - I am the largest animal in the world. **blue whale**

## Our Sweet Home

### I. Answer the following questions :

- Ans.**
- We need a house to live in.
  - It help the water to fall off immediately.
  - Because they are well-built and strong. Also there is a shortage of land in the cities.
  - A houseboat floats on a lake on water. Houseboats are very common in Kashmir and Kerala.
  - An 'igloo' is a house made up of ice.
  - The different types of houses are mainly divided into three categories :  
1. Permanent houses 2. Temporary Houses 3. Movable Houses.
  - Sloping roofs :** They help the water/snow to fall off immediately. They are made of tiles, asbestos or tin sheets. Sloping roofs are also made of palm leaves, weeds, straw or wood. These types of roofs are found in hilly areas.  
**Flat roofs :** Houses in plains have flat roofs. Steel bars, cement and bricks are used for flat roofs. Asbestos or tin sheets can also be used for a house with flat roof.  
**Semi-circular roofs :** Snow houses or igloos have semi-circular roofs.
  - Woollen floor in hilly areas; mud and straw floor in huts in plains; cement, marble or stones floor in permanent houses.

### II. Fill in the blanks :

- Ans.**
- A house made of ice is called **igloo**.
  - A house floating in water is called **houseboat**.
  - Huts are made of **mud, wood** or **bamboo**.
  - Floors in permanent houses are made of **cement, marble or stones**.
  - Scouts camp in tents are made of **canvas**.
  - Some people in Kashmir and **Kerala** live in houseboats.
  - Sloping** roofs help the water/snow to fall off quietly.
  - Flat roofs are made in **plains** dry regions.

### III. Write whether the following statements are 'true' or 'false' :

- Ans.**
- |   |              |
|---|--------------|
| 1. A permanent house does not last long.                    | <b>False</b> |
| 2. Caravans are the houses on wheels.                       | <b>True</b>  |
| 3. The tents can be moved easily from one place to another. | <b>True</b>  |
| 4. Tiles cannot be used for a house with a sloping roof.    | <b>False</b> |
| 5. Igloos are houses made of ice.                           | <b>True</b>  |
| 6. Temporary houses are made of bricks and cement.          | <b>False</b> |

7. Wooden floor is made in hills. True  
 8. Owing to shortage of land, multi-storeyed buildings are constructed. True

**IV. Think and write :**

- 1. Name four kinds of different houses.**  
**Ans.** Permanent, temporary, movable, igloo.
- 2. Name three types of roofs.**  
**Ans.** Sloping, flat and semi-circular.
- 3. Name four different materials used for building a house.**  
**Ans.** Cement, marble, stones, wood.
- 4. Name three types of movable houses.**  
**Ans.** Caravan, houseboat, tent.
- 5. Materials that make the huts.**  
**Ans.** Mud, wood, bamboo and straw.

**V. Tick (✓) the correct option :**

- Ans.** 1. Permanent houses are made up of steel bars, cement and :  
 (a) straw  (b) bricks   
 (c) bamboo  (d) none of these
2. Kachcha houses are made up of mud, bamboo and :  
 (a) cement  (b) steel   
 (c) straw  (d) all of these
3. Houses in the hilly areas have :  
 (a) flat roofs  (b) sloping roofs   
 (c) semi-circular roofs  (d) no roofs
4. House on wheels is called a/an :  
 (a) caravan  (b) igloo   
 (c) pucca house  (d) sweet home
5. Sloping roof of a house is made up of :  
 (a) tiles  (b) asbestos   
 (c) tin sheets  (d) any of these

## Safety Rules and First-Aid

**I. Answer the following questions :**

- Ans.** 1. Zebra crossing.  
 2. Green.  
 3. (i) Always walk on the footpath. (ii) Be careful and alert.

4. It will avoid accidents and injuries.
5. We will give him some primary aid.
6. Electricity, matchsticks, knife.

**II. Fill in the blanks :**

- Ans.**
1. Always walk on the **footpath**.
  2. Cross the road at the **zebra crossing**.
  3. Do not **play** or **run** on the road.
  4. It is not safe to touch **electric wires** and **plugs** with wet hands.
  5. Use your air-filled tubes while **swimming**.
  6. Call a **doctor** when someone gets injured.
  7. Stand in a **queue** at the bus-stop.
  8. Do not board the **moving** bus.

**III. Put a tick (✓) for safe and a cross (x) for dangerous :**

- |             |   |   |
|-------------|---|---|
| <b>Ans.</b> | 1. Throwing stones at a dog.                              | x |
|             | 2. Running while crossing the road.                       | x |
|             | 3. Walking on the footpath.                               | ✓ |
|             | 4. Hurting another player to win a game.                  | x |
|             | 5. Using a sharp instrument by yourself.                  | x |
|             | 6. Leaning out of a moving bus to say bye to your friend. | x |
|             | 7. To stand in a queue for the bus.                       | ✓ |
|             | 8. Playing tricks while cycling on the road.              | x |

**IV. Match the two columns :**

- | <b>Ans.</b> | <b>Column 'A'</b>             | <b>Column 'B'</b>              |
|-------------|-------------------------------|--------------------------------|
|             | 1. Electric wires and plugs   | (e) <b>never touch</b>         |
|             | 2. To get into the school bus | (c) <b>make a queue</b>        |
|             | 3. On the road                | (b) <b>never play</b>          |
|             | 4. When it is clear           | (a) <b>cross the road</b>      |
|             | 5. While bursting crackers    | (d) <b>wear cotton clothes</b> |
|             | 6. Air-filled tubes used for  | (g) <b>swimming</b>            |
|             | 7. Always walk                | (f) <b>on the footpath</b>     |

**V. Name each of the following :**

- |             |  |                       |
|-------------|--|-----------------------|
| <b>Ans.</b> | (a) Traffic light that allow you to go.    | <b>green</b>          |
|             | (b) The place you should cross roads from. | <b>zebra crossing</b> |
|             | (c) It is bad for your ears.               | <b>noise</b>          |
|             | (d) It can give you a dangerous shock.     | <b>electricity</b>    |
|             | (e) Blow it out before throwing it away.   | <b>matchstick</b>     |

Air and Wind**I. Answer the following questions :**

- Ans.**
1. Windmill, sailboat, gliders glide.
  2. We can allow the sand to leak from hand slowly. The direction of flow of sand is the direction of wind.
  3. Strong wind is called a storm. It uproot trees and poles.
  4. Strong wind is called a storm. Storms can uproot trees and poles, damage building, bridges, towers and crops. They can also make the boats and ships sink.
  5. Air has weight. It makes things to move. It exerts pressure.
  6. Water evaporates.
  7. Air has oxygen which is needed for burning. It has dust particles also.
  8. Grow more green plants. Do not light fireworks during the festivals. Use public transport to go to nearby places.

**II. Fill in the blanks :**

- Ans.**
1. Moving air is called **wind**.
  2. Strong winds cause a **storm**.
  3. Clothes dry up quickly in **summer** season.
  4. Change of water into water vapour is called **evaporation**.
  5. Air exerts **pressure**.
  6. Oxygen supports in **burning**.
  7. **Smoke** is given out when something is burnt.
  8. Air cannot be **seen** but it can be felt.

**III. Write whether the following statements are 'true' or 'false' :**

- Ans.**
- |   |              |
|---|--------------|
| 1. The smoke makes the air impure.              | <b>True</b>  |
| 2. We do not breathe air all the time.          | <b>False</b> |
| 3. Wind has no direction and no speed.          | <b>False</b> |
| 4. We should not cover our face while sleeping. | <b>True</b>  |
| 5. Pure air harms our lungs.                    | <b>False</b> |
| 6. Doors and windows should be kept opened.     | <b>True</b>  |
| 7. A wind vane tells the direction of the wind. | <b>True</b>  |
| 8. Air contains disease-causing germs.          | <b>True</b>  |
| 9. Gentle wind is called storm.                 | <b>False</b> |
| 10. Air moves things.                           | <b>True</b>  |

**IV. Match the following columns :**

- Ans.**
- |                                      |                      |
|--------------------------------------|----------------------|
| <b>Column 'A'</b>                    | <b>Column 'B'</b>    |
| 1. The disease-causing living beings | (b) are called germs |



- |   |                                |
|---|--------------------------------|
| 2. The process of conversion of water vapour into water | (c) is called condensation     |
| 3. Water vapour   | (a) is a gas                   |
| 4. Slowly moving air                                    | (i) is called breeze           |
| 5. Wind has a definite                                  | (d) direction                  |
| 6. Storms can damage                                    | (g) buildings and uproot trees |
| 7. Windmill   | (f) is used to produce current |
| 8. Impure air can                                       | (j) harm our lungs             |
| 9. Cars and buses give out                              | (h) smoke                      |
| 10. Wind mill can grind                                 | (e) corn                       |

**V. Give one word for each of the following :**

- |             |   |              |
|-------------|---|--------------|
| <b>Ans.</b> | 1. The slow moving air.                             | breeze       |
|             | 2. The moving air.                                  | wind         |
|             | 3. Another name for wind vane.                      | weather cock |
|             | 4. The process of changing water vapour into water. | condensation |
|             | 5. Disease-causing living beings.                   | germs        |

**VI. Tick (✓) the correct option :**

- |             |  |                    |                                     |                        |                                     |
|-------------|--|--------------------|-------------------------------------|------------------------|-------------------------------------|
| <b>Ans.</b> | 1. Air contains :                      | (a) water          | <input type="checkbox"/>            | (b) water vapour       | <input checked="" type="checkbox"/> |
|             |  | (c) ice            | <input type="checkbox"/>            | (d) all of these       | <input type="checkbox"/>            |
|             | 2. Smoke comes from :                  | (a) factories      | <input type="checkbox"/>            | (b) vehicles           | <input type="checkbox"/>            |
|             |  | (c) fuels          | <input type="checkbox"/>            | (d) all of these       | <input checked="" type="checkbox"/> |
|             | 3. The air becomes impure because of : | (a) dust particles | <input type="checkbox"/>            | (b) smoke              | <input type="checkbox"/>            |
|             |  | (c) carbon-dioxide | <input type="checkbox"/>            | (d) all of these       | <input checked="" type="checkbox"/> |
|             | 4. In summers, the sun is :            | (a) very hot       | <input checked="" type="checkbox"/> | (b) very cold          | <input type="checkbox"/>            |
|             |  | (c) very wet       | <input type="checkbox"/>            | (d) none of these      | <input type="checkbox"/>            |
|             | 5. Exercise and games make our body :  | (a) weak           | <input type="checkbox"/>            | (b) inactive           | <input type="checkbox"/>            |
|             |  | (c) lazy           | <input type="checkbox"/>            | (d) healthy and strong | <input checked="" type="checkbox"/> |

**VII. We are found in the air. Name us. Search us in the word grid. Colour us in different colours.**

**Ans.**

D	J	T	S	Z	M	R	Q	B	M	H	O
O	U	I	V	G	U	D	O	S	P	S	X
E	N	R	V	E	G	A	J	M	K	C	Y
S	A	T	E	R	Z	A	P	O	U	I	G
G	T	L	W	M	X	B	Y	K	R	W	E
B	Y	D	U	S	T	Z	P	E	X	F	N

1. It makes you sick. G E R M S
2. I come out of chimneys from the factories. S M O K E
3. Nothing can burn without me. O X Y G E N
4. I cause sneezing in people. D U S T

7

## Water

### I. Answer the following questions :

- Ans.
1. We use water for drinking, bathing, cleaning, washing clothes, cooking, building houses, irrigation and generating electricity.
  2. Rain, river, pond, lake, stream.
  3. Boiling, water filter and water purifier.
  4. Water exists in three different forms : solid, liquid and gas.  
Water changes its forms. It melts and becomes water. It cools and becomes ice. When water is heated, it becomes water vapour or steam.
  5. The sun heats up the water in rivers, lakes and seas. The water changes into water vapour and evaporates. The cool air above again changes the water vapour into tiny droplets of water. The droplets collect together to form clouds. As more and more droplets collect, the clouds become big and heavy. The water collected in the clouds falls back to the ground as rain. This water flows back to the rivers, lakes and seas. This whole process is repeated continuously and is known as the **Water Cycle**.
  6. Because it is impure and contains—germs, dust and other impurities.

### II. Fill in the blanks:

- Ans.
1. We use **wells** and **tube wells, hand pumps** to draw underground water.
  2. Water from rivers has **germs** in it.
  3. **Boiling** kills the germs present in the water.
  4. Collecting and **storing** is one way of saving water.
  5. When water freezes, it changes into **ice**.
  6. Water vapours goes up to form **clouds**.
  7. **Tap** water is safest for drinking.
  8. **Ice** on mountains melts to form water.

### III. Write whether the following statements are 'true' or 'false' :

- Ans.
- |   |       |
|---|-------|
| 1. Water freezes to form a gas.           | False |
| 2. We cannot hold ice in our hands.       | False |
| 3. On cooling, water vapours vanishes.    | True  |
| 4. Clouds contain tiny droplets of water. | True  |
| 5. River water flows into the sea.        | True  |

6. Only animals that live in rivers and seas, need water.
7. Dams are built on big rivers.
8. We have lots of water. We can use it lavishly.

**False**  
**True**  
**False**

**IV. Tick (✓) the correct option :**

- Ans.**
1. Which of the following has a definite shape?  
 (a) solid  (b) liquid   
 (c) gas  (d) none of these
  2. Steam is called :  
 (a) ice  (b) liquid   
 (c) gas  (d) all of these
  3. The safest water for drinking is :  
 (a) river water  (b) tap water   
 (c) pond water  (d) sea water
  4. The tap water is unsafe to drink during :  
 (a) summer season  (b) rainy season   
 (c) winter season  (d) autumn season
  5. We dig the following to get the underground water :  
 (a) pond  (b) lake   
 (c) stream  (d) well

**V. Match the following columns :**

- | <b>Ans.</b> | <b>Column 'A'</b>     | <b>Column 'B'</b> |
|-------------|-----------------------|-------------------|
| 1.          | Some rain water sinks | (b) underground   |
| 2.          | Steam is a            | (e) gas           |
| 3.          | Ice is a              | (d) solid         |
| 4.          | Water is a            | (a) liquid        |
| 5.          | Rain comes from       | (c) clouds        |

**VI. Arrange the following in the correct order :**

- Water is supplied to overhead tanks.
- It rains.
- Water is purified in the reservoir.
- Lakes, rivers and streams fill up.
- We get water in our taps.
- We drink this water.
- Water from lakes and rivers is taken to the main reservoir.

- Ans.**
- It rains.
  - Lakes, rivers and streams fill up.
  - Water from lakes and rivers is taken to the main reservoir.
  - Water is purified in the reservoir.

- Water is supplied to overhead tanks.
- We get water in our taps.
- We drink this water.

**VII. The water cycle given below is jumbled up. Put it in the correct order :**

- Ans.**
- |   |          |
|---|----------|
| 1. Tiny droplets of water collect to form clouds.     | <b>4</b> |
| 2. The sun heats up the water.                        | <b>1</b> |
| 3. Water vapour cools to form tiny droplets of water. | <b>3</b> |
| 4. Clouds become heavy and come down as rain.         | <b>5</b> |
| 5. Water evaporates to form water vapours.            | <b>2</b> |

● **Look at these pictures given below : Write 'right' or 'wrong' below each of them :**

**Ans.**



**8**

**Unit – 6** Materials and Matter

## Natural and Man-made Things

**I. What are the following things made of?**

- Ans.**
1. Spectacles that your grandfather wears.
  2. Door of your drawing room.
  3. Bucket of your bathroom.
  4. Shoes you wear.
  5. A flower vase.

glass  
wood  
plastic  
leather  
porcelain

**II. Name two things made of each following material :**

- |             |            |                 |                  |
|-------------|------------|-----------------|------------------|
| <b>Ans.</b> | 1. Glass   | <b>mirror</b>   | <b>tumbler</b>   |
|             | 2. Leather | <b>shoes</b>    | <b>belts</b>     |
|             | 3. Wood    | <b>chair</b>    | <b>bed</b>       |
|             | 4. Plastic | <b>bucket</b>   | <b>toys</b>      |
|             | 5. Metal   | <b>utensils</b> | <b>ornaments</b> |

**III. Write whether the following statements are 'true' or 'false' :**

- Ans.**
- |  |              |
|--|--------------|
| 1. Some natural things like rocks are non-living things. | <b>True</b>  |
| 2. All natural things are living things.                 | <b>False</b> |
| 3. Plants are natural living things.                     | <b>True</b>  |
| 4. Water is a non-living natural thing.                  | <b>True</b>  |
| 5. Living things do not grow.                            | <b>False</b> |
| 6. Non-living things do not move on their own.           | <b>True</b>  |
| 7. Silkworm gives us silk.                               | <b>True</b>  |
| 8. Glass is a natural material.                          | <b>False</b> |

**IV. Label the pictures as living and non-living and natural or man-made :**

**Ans.**



non-living, natural



non-living, man-made



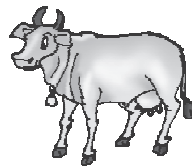
non-living, natural



non-living, natural



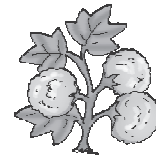
non-living, natural



living, natural



non-living, man-made



living, natural

**V. Read the table. Tick (✓) the correct column. The first one has been done for you :**

**Ans.**

	Natural	Living	Non-living	Man-made
1. Tiger	✓	✓	✗	✗
2. Book	✗	✗	✓	✓
3. Table	✗	✗	✓	✓
4. Jasmine plant	✓	✓	✗	✗
5. Water	✓	✗	✓	✗
6. Air	✓	✗	✓	✗
7. Ostrich	✓	✓	✗	✗
8. House	✗	✗	✓	✓
9. Petroleum	✓	✗	✓	✗

10. Clouds

✓

✗

✓

✗

**VI. How many things, can you put in the list below?**

**Ans.**

Solids		Liquids	
a brick	a chair	milk	water
a table	a pencil	petrol	diesel
a stone	a book	kerosene	mustard oil
a bag	a T.V.	sunflower oil	groundnut oil
a car	an eraser	coca cola	soda water
a knife	a wall	lime water	tea
a mango	a potato	coffee	soup
a tree	a calculator	juice	mango shake

**Now You do**

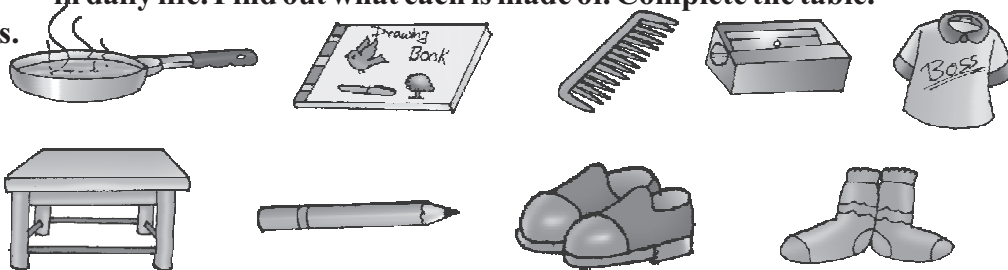
**1. Find out the natural and man-made things in your house. List them in a table.**

**Ans.**

Natural	Man-made
water	table
milk	chair
human beings	bulb
lizards	tube
air	lamp
sunlight	pen
flies	pencil
mosquitoes	shoes
ants	clothes

**2. Look at the pictures carefully. Make a list of the following things we use in daily life. Find out what each is made of. Complete the table.**

**Ans.**



Things we use	Used for	Made of	Hard or soft
table	Writing, keeping natural food	wood	hard
Utensil	Cooking	metal	hard
Drawing Book	Drawing	paper	soft
Comb	Combing	plastic	hard
Sharpner	Sharpning pencils	plastic	hard

# 9

## Rocks, Soils and Minerals

### I. Answer the following questions :

- Ans.**
1. The earth on which we live is a big ball of rocks and soil.
  2. Talc is used to make talcum powder.
  3. Diamond is used in jewellery. As it is the hardest rock, it is also used to cut glass.
  4. Soil is formed by breaking up of rocks into small pieces like stones and pebbles. Smaller pieces still break up into tiny particles and get mixed with the dead bodies of animals and plants to form soil.
  5. We get petrol, diesel, kerosene, vaseline and wax from petroleum.
  6. Some useful things found in rocks are called minerals. Iron, mica, coal, silver, copper, gold, petrol, diesel, copper, zinc.
  7. Deep holes are dug to bring out coal, diamond and other rocks. These holes are called mines. Big machines are used to extract the rocks.

### II. Fill in the blanks :

- Ans.**
1. Granite is a **hard** rock.
  2. **Coal** is used as a fuel in homes.
  3. The lead in pencils is made of **graphite**.
  4. The Taj Mahal is made of **white marble**.
  5. **Diamond** is used to cut glass.
  6. **Miners** are people who work in mines.
  7. Slate is a **smooth rock**.

### III. Tick (✓) the correct word :

- Ans.**
1. State/Chalk rock is found in layers.
  2. Chalk/Diamond is used for cutting glass.
  3. Graphite/Diamond is the hardest rock.
  4. Graphite/Slate is used for making lead pencil.
  5. Sandstone/Slate was used in making Red Fort at Delhi.

**IV. Name the following :**

- Ans.**
1. Rocks break up to form these.
  2. Deep holes are dug to extract rocks.
  3. The hardest rock.
  4. A soft rock used for writing.
  5. A rock used for burning.
  6. The Taj Mahal is made from this rock.

stones and pebbles  
mines  
diamond  
graphite  
coal  
marble

**V. Give one use of each of the following rocks :**

- Ans.**
1. Graphite : **It is used in pencils.**
  2. Diamond : **It is used in jewellery.**
  3. Sandstone : **It is used in building forts.**
  4. Coal : **It is used as fuel.**
  5. Slate : **It is used in making roofs.**

**V. Tick (✓) the correct option :**

- Ans.**
1. The colour of shale is :
 

<b>(a)</b> red	<input type="checkbox"/>	<b>(b)</b> grey	<input checked="" type="checkbox"/>
<b>(c)</b> pink	<input type="checkbox"/>	<b>(d)</b> white	<input type="checkbox"/>
  2. Which of the following is used for burning fire?
 

<b>(a)</b> coal	<input checked="" type="checkbox"/>	<b>(b)</b> marble	<input type="checkbox"/>
<b>(c)</b> shale	<input type="checkbox"/>	<b>(d)</b> granite	<input type="checkbox"/>
  3. Which is a soft rock?
 

<b>(a)</b> granite	<input checked="" type="checkbox"/>	<b>(b)</b> sandstone	<input type="checkbox"/>
<b>(c)</b> coal	<input type="checkbox"/>	<b>(d)</b> marble	<input type="checkbox"/>
  4. Sandstone is of this colour :
 

<b>(a)</b> brown	<input type="checkbox"/>	<b>(b)</b> green	<input type="checkbox"/>
<b>(c)</b> black	<input type="checkbox"/>	<b>(d)</b> red	<input checked="" type="checkbox"/>
  5. Which is the hardest rock known?
 

<b>(a)</b> marble	<input type="checkbox"/>	<b>(b)</b> sandstone	<input type="checkbox"/>
<b>(c)</b> diamond	<input checked="" type="checkbox"/>	<b>(d)</b> mica	<input type="checkbox"/>
  6. Marble is a :
 

<b>(a)</b> smooth rock	<input type="checkbox"/>	<b>(b)</b> layered rock	<input type="checkbox"/>
<b>(c)</b> hard rock	<input checked="" type="checkbox"/>	<b>(d)</b> none of these	<input type="checkbox"/>

**VII. Read the clues to complete this 'rocky' puzzle :**





# The Earth and The Heavenly Bodies

## I. Answer the following questions :

- Ans.**
1. The earth is a planet. Because there is an atmosphere on earth, which has air containing gases such as oxygen, nitrogen, etc.
  2. The moon is a natural satellite of the earth. There is no air on the moon. That is why there is no life on the moon.
  3. The sun is a big ball of fire. It give us heat and light.
  4. Due to the changes in the position of the earth, the moon appears to change its shape.
  5. Because it is the only planet which supports life.
  6. The earth rotates or spins on its axis. This rotation of the earth causes day and night.

## II. Fill in the blanks :

- Ans.**
1. The earth looks **blue** in colour.
  2. The **sun** is made up of hot burning gases.
  3. The **moon** is the closest neighbour to the earth.
  4. The **moon** does not have light of its own.
  5. Life exists only on the **earth**.
  6. The moon shines when **sunlight** falls on it.
  7. The **rotation** of the earth causes day and night.
  8. The earth goes round the **sun**.

## III. Who am I?

- Ans.**
- |  |                         |
|--|-------------------------|
| 1. I rotate on my axis.                  | <b>earth</b>            |
| 2. I can be seen only at night.          | <b>moon</b>             |
| 3. Nearly 71% of me is water.            | <b>surface of earth</b> |
| 4. I give you heat and light.            | <b>sun</b>              |
| 5. I am a planet that supports life.     | <b>earth</b>            |
| 6. I reflect the sunlight.               | <b>moon</b>             |
| 7. I am the brightest object in the sky. | <b>sun</b>              |
| 8. I do not look the same on all nights. | <b>moon</b>             |
| 9. I twinkle in the night sky.           | <b>star</b>             |

## IV. Match the following columns :

- | <b>Ans.</b> | <b>Column 'A'</b> | <b>Column 'B'</b>                        |
|-------------|-------------------|--|
|             | 1. Lake           | (c) <b>Water body surrounded by land</b> |
|             | 2. Island         | (d) <b>Surrounded by water</b>           |
|             | 3. Forest         | (b) <b>Thick bushes and trees</b>        |

4. Desert (g) Covered with sand  
 5. Mountain (e) Land rises very high  
 6. Plain (f) Flat land  
 7. Valley (a) A very deep area of land between two hills

**V. Write whether the following statements are 'true' or 'false' :**

- Ans.**
- |  |              |
|--|--------------|
| 1. A river flows all the time.                                 | <b>True</b>  |
| 2. Most rivers flow into ponds.                                | <b>False</b> |
| 3. A hill is smaller than a mountain.                          | <b>True</b>  |
| 4. A mountain is a hot place.                                  | <b>False</b> |
| 5. A small part of the earth is covered by water.              | <b>False</b> |
| 6. A desert becomes cold during the day.                       | <b>False</b> |
| 7. When land rises, it forms hills or mountains.               | <b>True</b>  |
| 8. It is always raining in the desert.                         | <b>False</b> |
| 9. Animals and plants that need little water live in a desert. | <b>True</b>  |
| 10. The earth is also known as the 'Blue Planet'.              | <b>True</b>  |

**VI. Give one word for the following :**

- |             |   |               |
|-------------|---|---------------|
| <b>Ans.</b> | 1. A very large place with water, but which does not flow.      | <b>lake</b>   |
|             | 2. Something which flows into the sea.                          | <b>river</b>  |
|             | 3. A dry place with very little rain.                           | <b>desert</b> |
|             | 4. It is formed when land rises. It is not very tall.           | <b>hill</b>   |
|             | 5. It is salty and covers a large part of the earth with water. | <b>ocean</b>  |
|             | 6. A vast land without hills or mountains.                      | <b>plain</b>  |

**VII. Tick (✓) the correct option :**

- Ans.**
- |  |   |   |  |
|--|---|---|--|
| 1. The shape of the moon is like a :                         | (a) plate <input type="checkbox"/>                            | (b) tumbler <input type="checkbox"/>                                  |  |
|  | (c) ball <input checked="" type="checkbox"/>                  | (d) star <input type="checkbox"/>                                     |  |
| 2. The sun is a :  | (a) large moon <input type="checkbox"/>                       | (b) star <input checked="" type="checkbox"/>                          |  |
|  | (c) shooting star <input type="checkbox"/>                    | (d) planet <input type="checkbox"/>                                   |  |
| 3. The sun is a big ball of fire. It gives us :              | (a) light and sound <input type="checkbox"/>                  | (b) air and light <input type="checkbox"/>                            |  |
|  | (c) light and heat <input checked="" type="checkbox"/>        | (d) heat and electricity <input type="checkbox"/>                     |  |
| 4. The sky looks blue during the day because sunlight :      | (a) makes the air look blue <input type="checkbox"/>          | (b) is blue <input type="checkbox"/>                                  |  |
|  | (c) makes cloud look blue <input checked="" type="checkbox"/> | (d) does not fall on it <input type="checkbox"/>                      |  |
| 5. The sun looks bigger than the other stars because it is : | (a) close to the stars <input type="checkbox"/>               | (b) the closest star to the earth <input checked="" type="checkbox"/> |  |
|  | (c) far away from the earth <input type="checkbox"/>          | (d) none of these <input type="checkbox"/>                            |  |

**I. Answer the following questions :**

- Ans.**
1. It gives us heat and light.
  2. Shadows are long in the morning and evening.
  3. Shadows are formed when something comes in the way of light.
  4. The sun is a star. The sun looks so small because it is very far away from us.
  5. As the earth changes its position, the moon seems to change its shape everyday.
  6. The length (size) and position of shadows change with the position of light. these are long in the morning and evening. They are very short at midday, when the sun is right overhead. Its direction is opposite to the direction of source of light.

**II. Fill in the blanks :**

- Ans.**
1. The day begins with **sunrise**.
  2. Light travels in a **straight** line.
  3. Sunlight helps plants to **grow**.
  4. Shadows always keep **changing**.
  5. Shadows are longer in the **morning and evening**.
  6. Shadows are **shortest** at noon.
  7. Shadows always fall on the **opposite** side of the source of light.
  8. A shadow is formed when something comes in the way of **light**.

**III. Tick (✓) the right option :**

- Ans.**
1. When the sun is right above our heads, the shadows are :
 

(a) short	<input checked="" type="checkbox"/>	(b) long	<input type="checkbox"/>
(c) broad	<input type="checkbox"/>	(d) thin	<input type="checkbox"/>
  2. When the sun shines, the days are :
 

(a) short	<input type="checkbox"/>	(b) dark and warm	<input type="checkbox"/>
(c) warm and bright	<input checked="" type="checkbox"/>	(d) dark and cool	<input type="checkbox"/>
  3. In the morning the sun rises in the :
 

(a) West	<input type="checkbox"/>	(b) East	<input checked="" type="checkbox"/>
(c) North	<input type="checkbox"/>	(d) South	<input type="checkbox"/>
  4. The sun is very far from us, so it looks :
 

(a) very huge	<input type="checkbox"/>	(b) very small	<input checked="" type="checkbox"/>
(c) very beautiful	<input type="checkbox"/>	(d) very ugly	<input type="checkbox"/>
  5. The sun is a :
 

(a) planet	<input type="checkbox"/>	(b) satellite	<input type="checkbox"/>
(c) star	<input checked="" type="checkbox"/>	(d) meteor	<input type="checkbox"/>