

1 My Family and I

Exercise

Section-I

A. Answer these questions orally :

- Ans.** 1. Do yourself.
 2. Do yourself.
 3. A family in which grandparents, parents, uncles, aunts, cousins live together is called a joint family.

B. Tick (✓) the correct option :

- Ans.** 1. c. family 2. c. Joint family
 3. a. parents and their children 4. a. grandparents.

C. Write with the help of your parents the names of the following :

- Ans.** Do yourself.

Section-II

A. Fill in the blanks :

- Ans.** 1. We live in a **house** with our family.
 2. We all share the work at **home**.
 3. A **common** name is followed by a surname.
 4. The children of our uncles and aunts are our **cousins**.
 5. **Birthday** and **anniversaries** are special days.

B. State true or false :

- Ans.** 1. True 2. True 3. False 4. False.

C. Answer the following questions :

- Ans.** 1. A family, in which only parents and their children live is called nuclear family.
 2. In Joint families, grandparents, parents, aunts, uncles and cousins live together.
 3. The family members share, care and help one another.
 4. We have fun with our family members in many ways. Such as :
- Going for a holiday outside the city. • Going for a picnic or zoo.
 - Playing indoor and outdoor games. • Celebrating special days.

2 Our Food

Exercise

Section-I

A. Answer these questions orally :

- Ans.** 1. Plants and animals.
 2. Plants give us fruits, vegetables, nuts, grains and pulses.
 3. Lunch.

B. Tick (✓) the correct option :

- Ans.** 1. c. energy 2. a. Potato
3. b. dinner 4. a. vegetables

C. Colour in red what we get from plants and in blue the food items we get from animals :

	Blue Eggs	Red Grapes	Red Oranges	Blue Milk	Red Rice	Blue Meat
Ans.	Red Wheat	Blue Butter	Red Brinjal	Red Corn	Blue Cheese	Red Sugar
	Red Peanuts	Red Almonds	Red Banana	Red Apples	Blue Ice-cream	Red Groundnut

Section-II

A. Fill in the blanks :

- Ans.** 1. We get food from **plants** and **animals**.
2. **Body building** foods make our bones and muscles strong.
3. Breakfast is usually the **first** meal of the day.
4. We must also drink plenty of **water**.
5. We should eat at **regular** intervals.

B. State true or false :

- Ans.** 1. False 2. True 3. False 4. True 5. False.

C. Match the following :

- | | |
|------------------------|-------------------------------------|
| Ans. 1. Food | → a. Rich in carbohydrates and fats |
| 2. Plants and animals | → b. first meal of the day |
| 3. Energy giving foods | → c. Gives us energy |
| 4. Breakfast | → d. Junk food |
| 5. Pizzas and burgers | → e. Sources of food |

D. Answer the following questions :

- Ans.** 1. Food is one of our basic need. We all eat food. We need food to live. It helps us to grow and gives us energy to work, think and play. It keeps us healthy and makes us strong.
2. Plants and animals are the sources of food.
3. Vegetable and fruits keep us in good health. These are called protective food.
4. • Wash your hands and mouth well before and after eating.
• Eat at regular intervals.
• Concentrate on what you are eating and enjoy your food.
• Eat plenty of fresh fruits and vegetables.
5. Sometimes we eat food more for taste than health. Such foods are called junk food. Eating too much junk food can make us sick.



Exercise

Section-I

A. Answer these questions orally :

- Ans.** 1. A house protects us from the heat of the Sun, rain and wild animals. It also protects us from thieves and robbers.
 2. Bungalow, Duplex.
 3. Sometimes houses are made of the long poles of wood and animal skin. These houses are called tepees.

B. Tick (✓) the correct option :

- Ans.** 1. a. houses
 2. a. ice blocks
 3. b. locked
 4. c. garbage tins

C. What is my name?

- Ans.** 1. I keep my story book on a bookshelf. I am **Rihan**.
 2. I keep my uniform in the wardrobe. I am **Garima**.
 3. I keep my pillow in the bedroom. I am **Fatima**.

Section-II

A. Fill in the blanks :

- Ans.** 1. Early men lived in the **caves**.
 2. **Kutch** houses are commonly found in villages.
 3. Houses which have **wheels** are called caravans.
 4. A **plumber** fixes the taps and pipes.
 5. We must keep our houses **clean** and **fresh**.

B. State true or false :

- Ans.** 1. True 2. False 3. True 4. False 5. True

C. Match the following :

- | | | |
|-----------------------------|---|--------------------------------|
| Ans. 1. Kutch houses | → | a. Houses made of animals skin |
| 2. Shikaras | → | b. Swept and mopped everyday |
| 3. Tepees | → | c. Houseboats in Kashmir |
| 4. Windows | → | d. Temporary houses |
| 5. Floors | → | e. Let in fresh air |

D. Answer the following questions :

- Ans.** 1. We need house because a house protect us from the heat of the Sun, rain and wild animals. It also protects us from thieves and robbers.
 2. We must keep the doors of our houses locked. This keeps us and our belongings safe.
 3. To keep our houses clean and fresh :
 • Furniture must be dusted regularly.
 • Garbage must be thrown in covered garbage tins.

- We should greet and respect all the elderly people living our neighbourhood.
3. Every neighbourhood must have a garbage bin. Always throw the garbage there. Never throw it out of the window, on the footpath or on the road. Always throw garbage in the right place.

7 Services in the Neighbourhood



Exercise

Section-I

A. Answer these questions orally :

- Ans.** 1. A bank is a place where we can keep our money and jewellery safe.
 2. We can buy envelopes, stamps and postcards at the local post office.

B. Tick (✓) the correct option :

- Ans.** 1. b. bank 2. b. Postman 3. c. fire fighters

C. These are some places in a neighbourhood. Can you identify them?

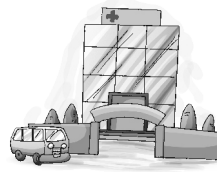
Ans.



Police station



Bank



Hospital



Post Office

Section-II

A. Fill in the blanks :

- Ans.** 1. We can deposit **cheques** in the bank.
 2. A hospital has many **doctors** and **nurses**.
 3. **Postman** bring letters to our homes and offices.
 4. A **Fire station** has fire engines.
 5. We buy various things from a **market**.

B. Match the following :

- Ans.**
- | | | |
|-----------------|---|----------------------------|
| 1. Markets | → | a. Fire fighters |
| 2. Police | → | b. Money and valuables |
| 3. Hospital | → | c. Busy places |
| 4. Fire Station | → | d. Sick people are treated |
| 5. Bank | → | e. Protect us from thieves |

C. Answer the following questions :

- Ans.** 1. We go to chemist, bakery, green-grocers, grocery shop, stationary shop, a tailor, a laundry etc. in the market.
 2. A hospital is a place where sick are treated by many nurses and doctors. It also has an ambulance.
 3. Fire-fighters work in a fire station. They go to houses and buildings where

there is a fire. Fire-fighters use water hosepipes to put out fire. They climb ladders and rescue people trapped in burning buildings.

4. Policemen keep a look for thieves or hooligans. They take round of the streets on motor bikes. So they are very helpful to us.

8 Places of Worship



Exercise

Section-I

A. Answer these questions orally :

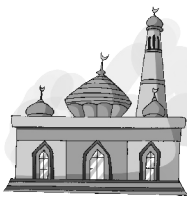
- Ans.** 1. Mosque. 2. Temple, Mosque, Church and Gurudwara.
3. The Bible.

B. Tick (✓) the correct answer :

- Ans.** 1. c. The Bible 2. a. Gurudwara 3. c. peace

C. Name the places of worship :

Ans.



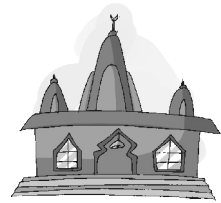
Mosque



Church



Gurudwara



Temple

Section-II

A. Fill in the blanks :

- Ans.** 1. People of different **religions** live together in a neighbourhood.
2. The **Puja** is performed in the temples.
3. The Christians go to pray in a **Church**.
4. **Guru Granth Sahib** is the holy book of the Sikhs.
5. We should **respect** all religions.

B. State true or false :

- Ans.** 1. False 2. False 3. True 4. True 5. True.

C. Match the following :

- Ans.** 1. Temple → a. Mother Mary and Jesus Christ
2. The Quran → b. Founder of Sikhism
3. Christians → c. Aarti
4. Guru Nanak → d. Equal
5. All religions → e. Holy book of the Muslims

D. Answer the following questions :

- Ans.** 1. We offer sweets, fruits and flowers in the temple.
2. Christians pray to mother Mary and Jesus Christ.
3. 'Grantee'. 4. In a temple.
5. All religions teach us not to quarrel and live peacefully together.

9 Festivals and Celebrations



Exercise

Section-I

A. Answer these questions orally :

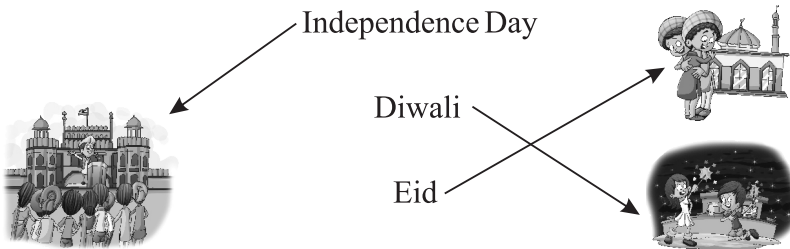
- Ans. 1. National festivals are celebrated by all the people of a country.
2. A common kitchen is called langar in which rich and poor eat food together in a row.
3. Yes, we enjoy a lot.

B. Tick (✓) the correct option :

- Ans. 1. a. 26 January 2. c. Sikhs 3. c. January

C. Draw lines to match the festivals with their names :

Ans.



Section-II

A. Fill in the blanks :

- Ans. 1. We celebrate many festivals with our **family and friends**.
2. Independence Day is celebrated on **15 August**.
3. **Guruparva** is the birthdays of the Sikh's Guru.
4. Pongal is celebrated mainly in **Tamil Nadu**.
5. **Makar Sankranti** is celebrated in Uttar Pradesh and Maharashtra.

B. State true or false :

- Ans. 1. True 2. False 3. True 4. True 5. False.

C. Answer the following questions :

- Ans. 1. Festivals are the days of happiness and joy. We celebrate many festivals together. Some of them are : Diwali, Eid, Christmas, Guruparva etc.
2. Because in this day, people decorate their houses with burning diyas and candles. They burst crackers and exchange sweets and gifts. We illuminate our houses with electric light.
3. Independence Day is celebrated on August 15. It is the day on which India become free from the British rule in 1947. The Prime Minister unfurls the National Flag at Red Fort in Delhi.
4. Harvest festivals are celebrated for a good crop production. People thank God for giving them lots of food and enjoy. We celebrate many types of harvest festivals. Such as :
Pongal, Onam, Lohri, Bihu and Makar Sankranti.



Exercise

Section-I

A. Answer these questions orally :

- Ans.** 1. Most of us travel from place to place every day. Grown-ups travel to work, for business purposes or transport goods from one place to another.
 2. Air transport.

B. Tick (✓) the correct answer :

- Ans.** 1. c. both of these
 2. b. helicopter
 3. b. Helicopters
 4. a. police jeep

C. Identify the following vehicles :

Ans.



Scooter



Aeroplane



Bicycle



Boat

Section-II

A. Fill in the blanks :

- Ans.** 1. Some places are a very short **distance** away.
 2. **Land transport** is the most popular means of transport.
 3. The **trains** runs on iron rails.
 4. Water transportation is the least **expensive**.
 5. Air transportation includes **aeroplane** and **helicopters**.

B. State true or false :

- Ans.** 1. True 2. False 3. True 4. True 5. True.

C. Match the following :

- Ans.**
- | | | |
|------------------|---|------------------|
| 1. Two-wheeler | → | a. Cycle |
| 2. Three-wheeler | → | b. Aeroplane |
| 3. Animal | → | c. Scooter |
| 4. Air | → | d. Auto rickshaw |
| 5. Man | → | e. Tonga |

D. Answer the following questions :

- Ans.** 1. Car, Bus, etc.
 2. Scooter, Train, Bike, Aeroplane
 3. Air transport.
 4. A fire engine is red in colour, it has a loud siren. It puts out a fire.
 An ambulance is white in colour. The word 'ambulance' is written on it in mirror image. It has a loud siren too!

A lifeboat is a special boat that saves people from drowning in the sea and ocean.

A police jeep has a revolving light and a siren. It is a jeep that is driven by the police.

A tractor is a heavy vehicle used by farmers on their crop field.

11 Communication



Exercise

Section-I

A. Answer these questions orally :

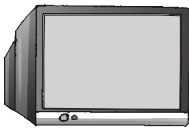
- Ans.** 1. We need to communicate with others to give and get informations.
 2. The internet is the system of world wide computers.

B. Tick (✓) the correct answer :

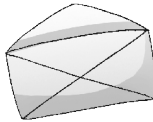
- Ans.** 1. a. post office
 2. a. cheap
 3. a. Telephone
 4. c. electronic mail

C. Identify the following means of communication :

Ans.



Television



Letter



Newspaper



Radio

Section-II

A. Fill in the blanks :

- Ans.** 1. **Communication** means to send messages to others.
 2. **The letters** are used to send messages with the country.
 3. **Newspaper** and **Magazines** are very common means of communication.
 4. An **E-mail** is the fastest to communicate today.
 5. The television has many **channels**.

B. State true or false :

- Ans.** 1. True 2. False 3. True 4. False 5. True.

C. Match the following :

- Ans.** 1. Communication —> a. Cheap and informative
 2. Aerogramme —> b. Quickest means of communication
 3. Telephone —> c. Sending messages or information
 4. E-mail —> d. Sending messages to other countries
 5. Newspapers —> e. Send through the internet

D. Answer the following questions :

- Ans.** 1. Mobile phone.
 2. Do yourself.
 3. An e-mail is an electronic mail. It is the fastest way to communicate today.
 4. E-mail.



Exercise

Section-I

A. Answer these questions orally :

- Ans.** 1. Chess, Carrom, Ludo, Hide and seek, Playing cards.
 2. We take rest and have fun by playing some games or get relaxation.

B. Tick (✓) the correct option :

- Ans.** 1. a. Cricket 2. b. zoo
 3. a. recreation 4. c. fun
 5. a. read

C. Cancel the wrong word(s) :

- Ans.** 1. A (park/~~school~~) has swings and flowers.
 2. (~~Cricket/Dado~~) is an outdoor game.
 3. We have fun when we go for a (~~picnic/cooking class~~).
 4. We can see animals and birds at the (~~station/zoo~~).
 5. We learn new words by (~~playing/reading~~).

Section-II

A. Fill in the blanks :

- Ans.** 1. **Weekends** are also a good time to relax.
 2. Recreational activities make us feel **happy** and **refreshed**.
 3. **T.V.** is a popular source of great entertainment.
 4. Creative people collect things for **enjoyment**.
 5. We should take a break from our **daily** jobs.

B. State true or false :

- Ans.** 1. False 2. True 3. True 4. True 5. False

C. Match the following :

- Ans.** 1. Recreation → a. Indoor games
 2. TV → b. Enjoyment and relaxation
 3. Chess, carrom → c. Other recreational activities
 4. Walking, swimming → d. Popular source of entertainment
 5. Circus, movies → e. Outdoor activities

D. Answer the following questions :

- Ans.** 1. The time we have when we do not have any other planned activities or duties is our leisure time.
 2. We feel refreshed and happy after recreations.
 3. Walking, jogging, swimming, etc.
 4. Elders like to go to adventure clubs, trekking, nature walks and rock climbing.
 5. Children like to go to circus, parks, movie halls and zoo. They can go to ride bicycles, go skating and fly kites too.



Exercise

Section-I

A. Answer these questions orally :

- Ans. 1. Weather is the temperature or conditions in the air outside in a particular day.
2. There are five seasons in India.

B. Tick (✓) the correct option :

- Ans. 1. a. summers 2. b. Cotton 3. c. summer

C. Tick (✓) what you would like to do on a summer day :

Ans.



Section-II

A. Fill in the blanks :

- Ans. 1. People go out for walks in the **morning**.
2. We wear light **cotton** clothes in summer.
3. The cold season is called **winter**.
4. The **spring** season falls between winter and summer.
5. **Leaves** change colour in autumn.

B. State true or false :

- Ans. 1. True 2. False 3. True 4. False.

C. Answer the following questions :

- Ans. 1. When weather conditions remain the same over a few months we call it a season.
2. It is a very hot day. It is summer. In this season, we like to stay indoors. We enjoy eating ice cream. We like to drink cold water or juices. We wear light cotton clothes in summer. March, April, May and June are the summer months in some places in India.
3. We wear woollen and fur clothes to keep warm. People use room heaters or light bonfires.
4. Spring season.

15 Directions and Time



Exercise

Section-I

A. Answer these questions orally :

Ans. 1. East, West, North and South.

2. Stand straight looking at the rising sun. Front of you is the East. Behind you is the West. To your left is North. To your right is South.

3. Minutes.

B. Tick (✓) the correct option :

Ans. 1. c. east

2. a. 12

c. b. twenty-four

Section-II

A. Fill in the blanks :

Ans. 1. To reach a place you need to follow **direction**.

2. The Sun sets in the **West**.

3. The Sun **overhead** at noon.

4. We **sleep** at night.

5. It is **coal** and a little **dark** during evening.

B. State true or false :

Ans. 1. True

2. False

3. True

4. False

5. True.

C. Match the following :

Ans. 1. Directions

2. Road signs

3. Compass

4. Week

5. Day

a. Finding out directions

b. Twenty-four hours

c. Four in number

d. Show directions

e. 7 days

D. Answer the following questions :

Ans. 1. Landmarks are some important places or things which helps us to identify special address. Such as—post office, banyan tree, dairy, bank, etc.

2. North, South, East and West.

3. We go to school in the morning.

4. We go to play in the evening.

5. To reach a place we need to fellow directions. They help us to go to destination.

16 Land, Air and Water



Exercise

Section-I

A. Answer these questions orally :

Ans. 1. A small model of the Earth is called a globe.

2. Rain.

B. Tick (✓) the correct option :

Ans. 1. b. Earth 2. a. sleeping 3. c. atmosphere

C. Name the landforms :

Ans.



Mountains



Stream/river



Plains.

D. Cancel the incorrect word :

- Ans.** 1. We grow crops in the ~~sea~~/plains.
2. There is ~~water~~/air all around the Earth.
3. We can feel/~~see~~ the air around us.
4. Lowland between two hills is called a ~~plateau~~/valley.

Section-II

A. Fill in the blanks :

- Ans.** 1. The **Earth** is our home.
2. Rivers flow in the **plains**.
3. Both **plants** and **animals** need water to live.
4. **Snow** and **hail** are also forms of water.
5. If we breathe in the **polluted** air, we may become sick.

B. State true or false :

- Ans.** 1. False 2. True 3. True 4. False 5. True.

C. Answer the following questions :

- Ans.** 1. Land is flat in some places on Earth. Flat land is called a plain.
2. Fresh air or oxygen.
3. We can not drink sea water because it is salty.
4. Ponds, rivers, wells, rain etc.
5. Because we are so close to the earth and it is so large that the curvature is not easy to notice.

17 Early Humans—Their Life

Unit-7 : Early Humans



Exercise

Section-I

A. Answer these questions orally :

- Ans.** 1. Invention of wheel made the life of the early humans fast and easier.
2. Horses, donkeys and bullocks and easier.

B. Tick (✓) the correct option :

- Ans.** 1. a. simple 2. c. Dog
3. b. logs 4. b. round

Section-II

A. Fill in the blanks :

- Ans.** 1. Early humans led a very **simple** life.
2. Early humans could **think and speak**.
3. Early humans had to carry loads on their **back**.
4. **Raft** was a platform of straight logs that float on water.
5. **The discovery of wheel** improved the life of early humans.

B. State true or false :

- Ans.** 1. True 2. False 3. True 4. False 5. True.

C. Match the following :

- Ans.** 1. Raft → a. Cart of logs
2. Sledge → b. Could think and speak
3. Wheel → c. Round log
4. Donkey → d. Platform of log
5. Early humans → e. Animal to carry load

D. Answer the following questions :

- Ans.** 1. The early humans realised that round logs of wood could move easily on the ground. That idea was converted into the discovery of wheel.
2. The discovery of wheel made the land travel easier and faster. It also improved the life of early humans.